

8 7 6 5 4 3 2 1

ITEM	PART #	DESCRIPTION	QTY.
1	521847.13	DECK STIFFENER PLATE	1
2	304109	CARR. BOLT- 7/16 X 1.25 NC GR5 PL	4
3	301303	LOCK WASHER- 7/16 PL	4
4	301103	FLAT WASHER- 7/16 PL	4
5	305603	HEX NUT - 7/16NC GR5 PL	4

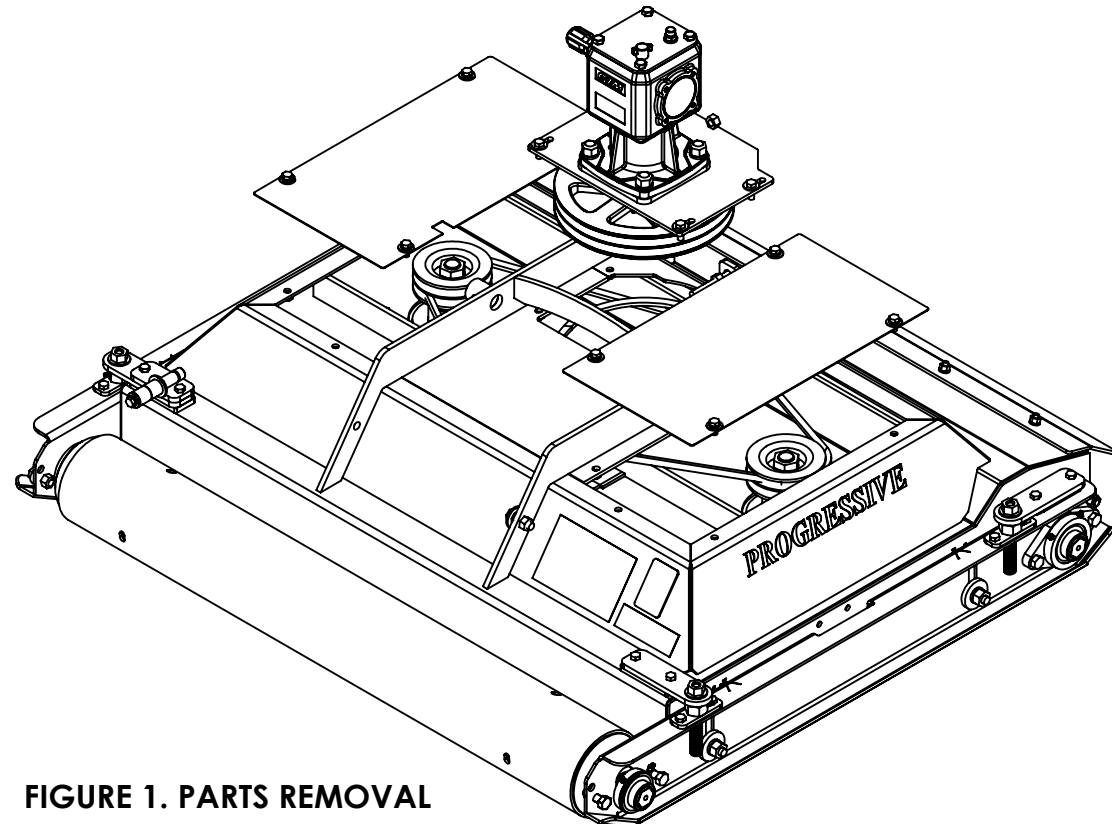


FIGURE 1. PARTS REMOVAL

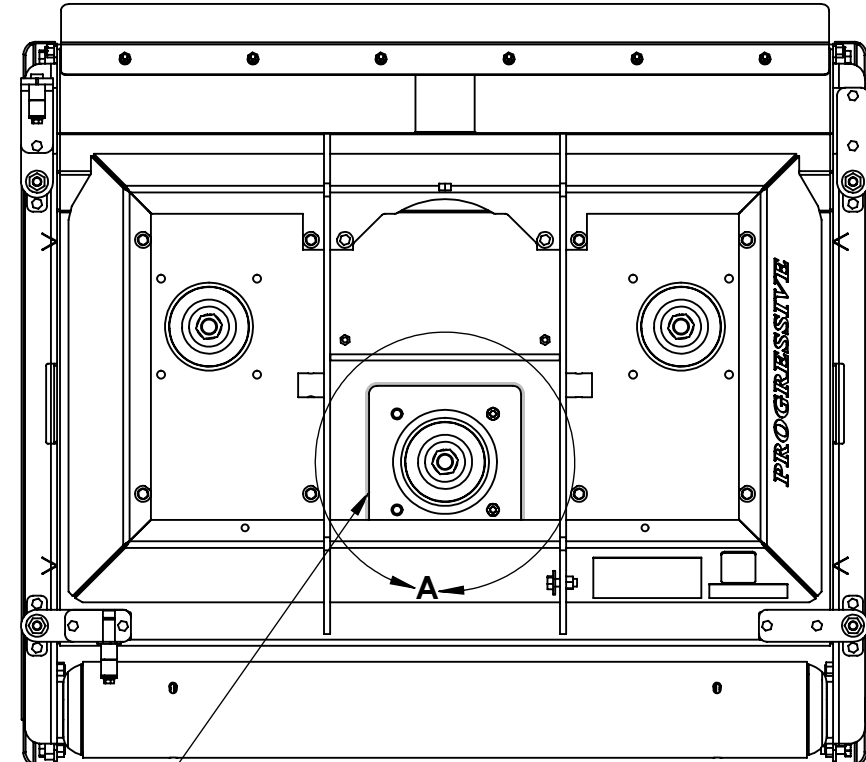


FIGURE 2. PLATE INSTALLATION

521847.13 - DECK STIFFENER PLATE

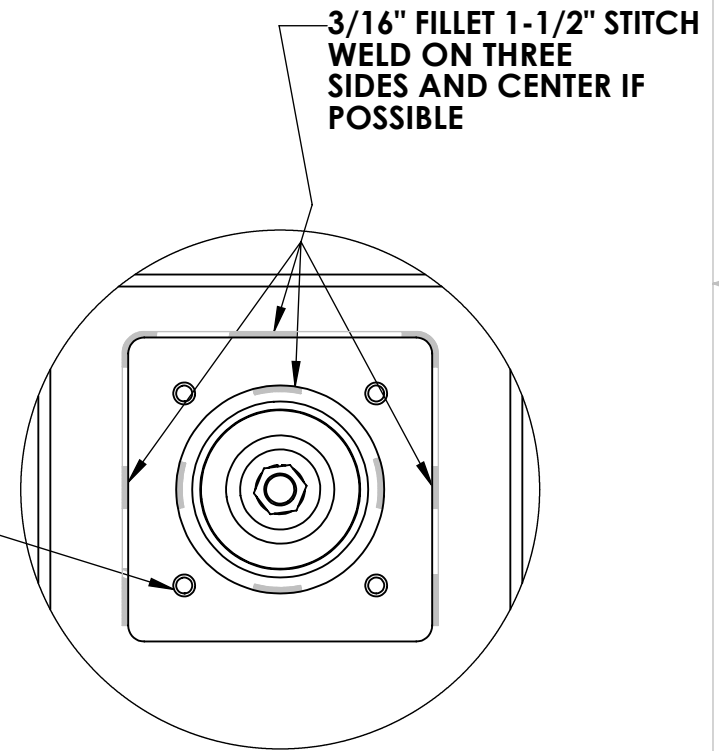


FIGURE 3. WELD
DETAIL A
SCALE 1 : 6

PROCEDURE:

1. BEFORE ANY WORK IS COMPLETED ON THE MACHINE ENSURE THAT THE WINGS ARE DOWN AND THE MACHINE IS ON A SAFE AND FLAT SURFACE. DISCONNECT TRACTOR FROM MOWER BEFORE WELDING. SEE OPERATOR'S MANUAL FOR FURTHER INSTRUCTIONS.
2. REMOVE DECK SHIELDING AND BELTS. THEN REMOVE GEAR BOX, PULLEY, AND THE MOUNTING PLATE. SEE FIGURE 1.
3. PLACE PART 521847.13 - DECK STIFFENER PLATE OVER SPINDLE AND ENSURE IT IS CENTERED AND THE HOLES ARE LINED UP. USE THE CARRIAGE BOLTS TO LINE UP THE HOLES. SEE FIGURE 2.
4. STITCH WELD IN THE PLATE. SEE FIGURE 3 DETAIL A FOR WELDING INSTRUCTIONS.
5. REINSTALL THE GEAR BOX AND BELTS AND TENSION BELTS PROPERLY. SEE OPERATOR'S MANUAL.
6. REINSTALL DECK SHIELDING.

CARRIAGE BOLT

DRAWING ACC TO: PTE-RDG-001	NAME	DATE	
	DRAWN		
DO NOT SCALE DRAWING	CHECKED:		TDR-X DECK STIFFENER WELD
	ENG APPR.		
PROPRIETARY AND CONFIDENTIAL THE INFORMATION CONTAINED IN THIS DRAWING IS THE SOLE PROPERTY OF PROGRESSIVE TURF EQUIPMENT INC. ANY REPRODUCTION IN PART OR AS A WHOLE WITHOUT THE WRITTEN PERMISSION OF PROGRESSIVE TURF EQUIPMENT INC IS PROHIBITED.	UNLESS OTHERWISE SPECIFIED: DIMENSIONS ARE IN INCHES TOLERANCES: FRACTIONAL: ± 1/32 ANGULAR: MACH ± 0.003 BEND ± 0.5 TWO PLACE DECIMAL ± 0.020 THREE PLACE DECIMAL ± 0.005		SIZE DWG. NO. REV B 541008-DECK WELD A
	REVISIONS		SCALE: 1:16 WEIGHT: 629.266 SHEET 1 OF 1

REV.	DCN	DESCRIPTION	DATE	BY
A	21016	FIRST RELEASE	2021-11-04	IDB

8 7 6 5 4 3 2 1