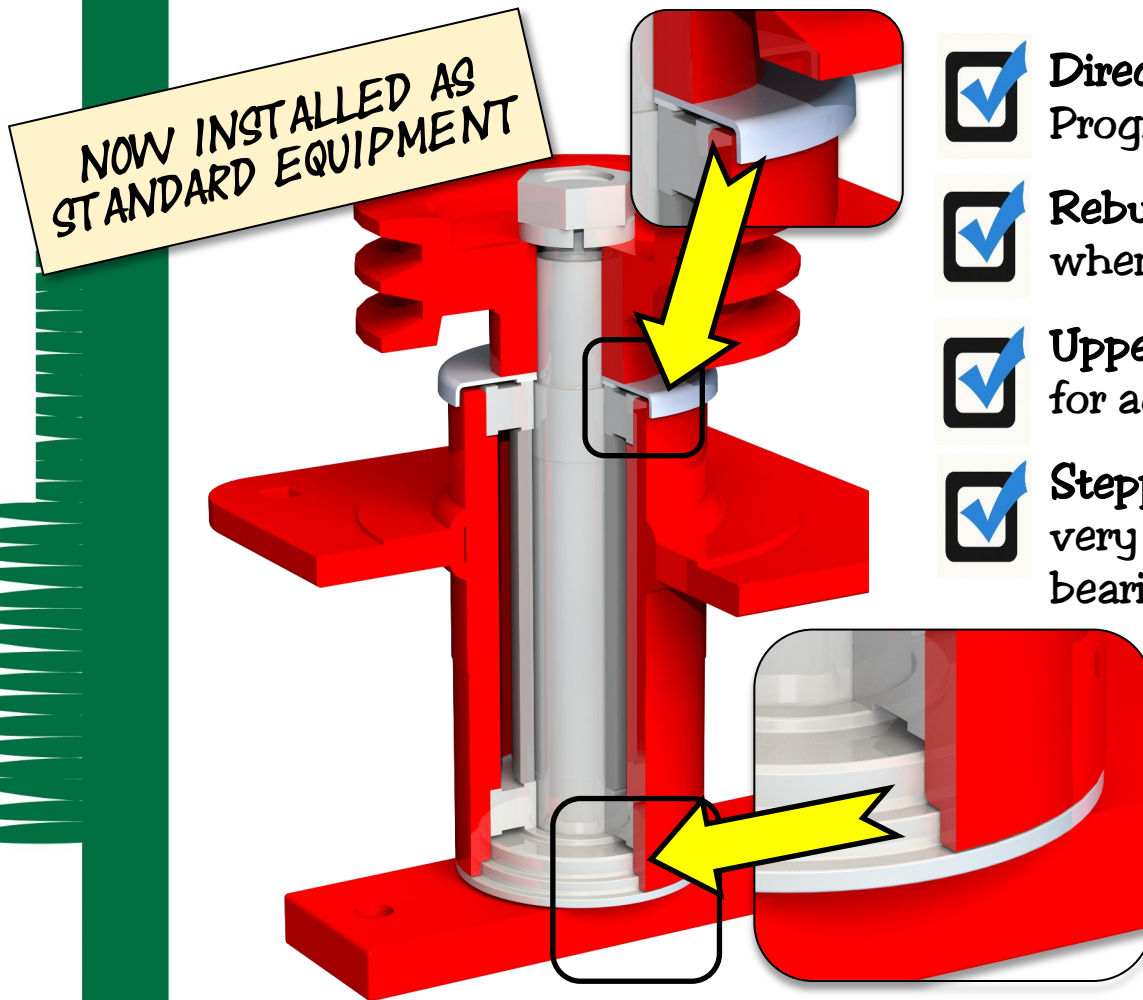


# Maintenance Free Blade Spindles with upper and lower **SPLASH** Shields

Moisture is the greatest enemy to a sealed bearing. Keeping water away from a warm bearing is the key to a long trouble free service life. Progressive's Splash Shield Maintenance Free Blade Spindles is designed to do that!



- Directly interchangeable:** with existing Progressive blade spindles
- Rebuildable:** All components can be used when rebuilding older spindles
- Upper Shield:** Caps the top of the spindle for added protection
- Stepped Lower Shield:** Makes water entry very difficult thus protecting the lower bearing from moisture contamination

**Ideal for all TD92, Pro-Max, TDR-22 / TDR-26 and TDR-30 mowers, no matter the vintage!**

**PROGRESSIVE**  
TURF EQUIPMENT INC.  
The Better Built Choice™

# Older mowers can be updated to current production standards!

Splash Shields are included in the following

## SPINDLE REBUILD KITS

### MAINTENANCE FREE BLADE SPINDLES REBUILD KITS

P/N 527563 for TDR-22, TDR-26, TDR-30

P/N 527549 for TD92 PM-36

### GREASEABLE BLADE SPINDLES REBUILD KITS

P/N 527570 for TDR-22, TDR-26, TDR-30

P/N 527545 for TD92 PM-36

The above spindle rebuild kits (item #13) contain both the top and bottom splash shields, (items 7 and 10). See illustration

When rebuilding a blade spindle, DO NOT hammer the bearings in. ALWAYS refer to the instructions found in the Operator's Manual.

NOTE: when rebuilding a spindle reusing an older housing, the bottom step of the lower shield (item 10) will be exposed.

## SPLASH SHIELDS ARE NOW STANDARD EQUIPMENT

Production cut-in beginning serial numbers:

TDR-22 s/n 2093478, TDR-26 s/n 2026153, TDR-30 s/n 20301074

TD92 s/n 20941348, Pro-Max 36 s/n 20371074

Complete spindle assemblies have been assigned new part numbers as they include both shields and a new housing:

### MAINTENANCE FREE BLADE SPINDLES c/w pulley:

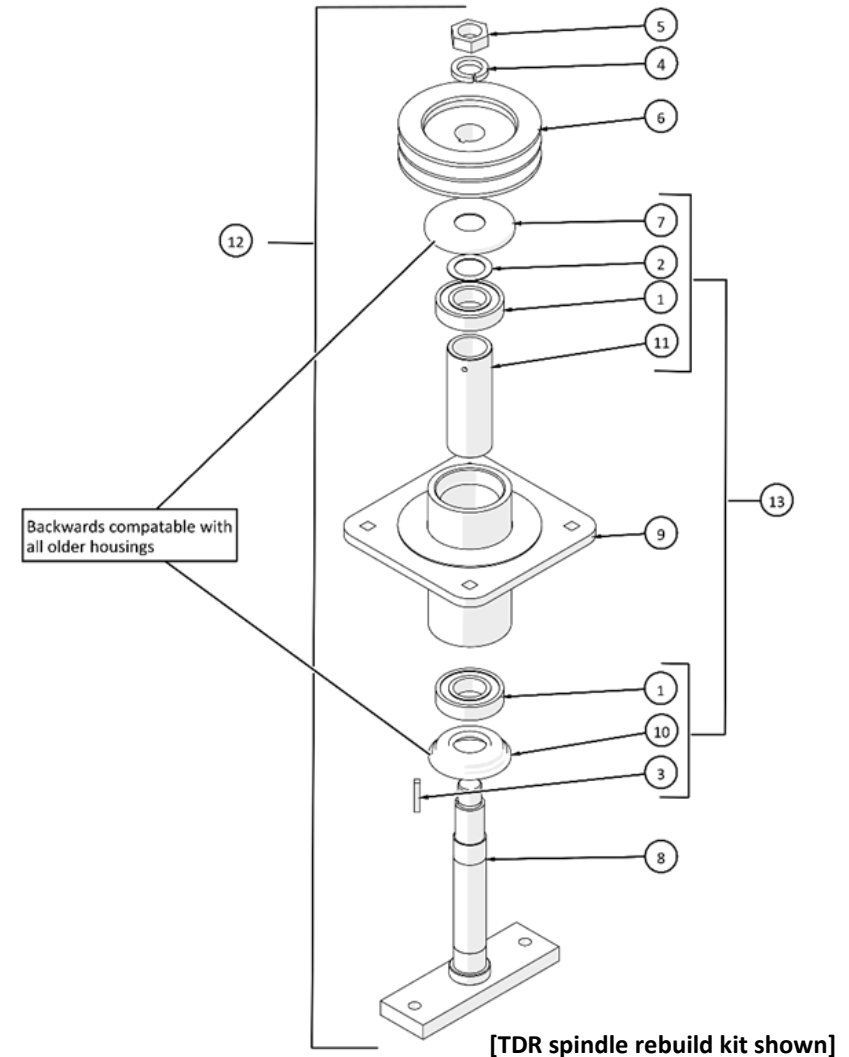
P/N 527562 for TDR-22, TDR-26, TDR-30

P/N 527560 for TD92 PM-36

### GREASEABLE BLADE SPINDLES c/w pulley:

P/N 527566 for TDR-22, TDR-26, TDR-30

P/N 527548 for TD92 PM-36



ITEM	DESCRIPTION	QTY	ITEM	DESCRIPTION	QTY
1	BEARING - MAINTENANCE FREE	2	8	BLADE SPINDLE WELD- TDR-22	1
2	SHIM WASHER - 1.25 (9 PCS)	1	9	SPINDLE HOUSING - TDR-22	1
3	KEY - 1/4" X 1.50"	1	10	HOUSING BOTTOM CAP	1
4	LOCKWASHER L.H. (3 PCS)	1	11	BEARING SPACER TUBE - TDR 22	1
5	HEX NUT- L.H.	1	12	BLADE SPINDLE ASSY COMPLETE - TDR-22	1
6	5.9" PULLEY- 1-1/4" BORE	1	13	SPINDLE REBUILD KIT MFREE TDR22	1
7	SHIELD - SPINDLE TOP	1			

**PROGRESSIVE**  
TURF EQUIPMENT INC.  
The Better Built Choice™