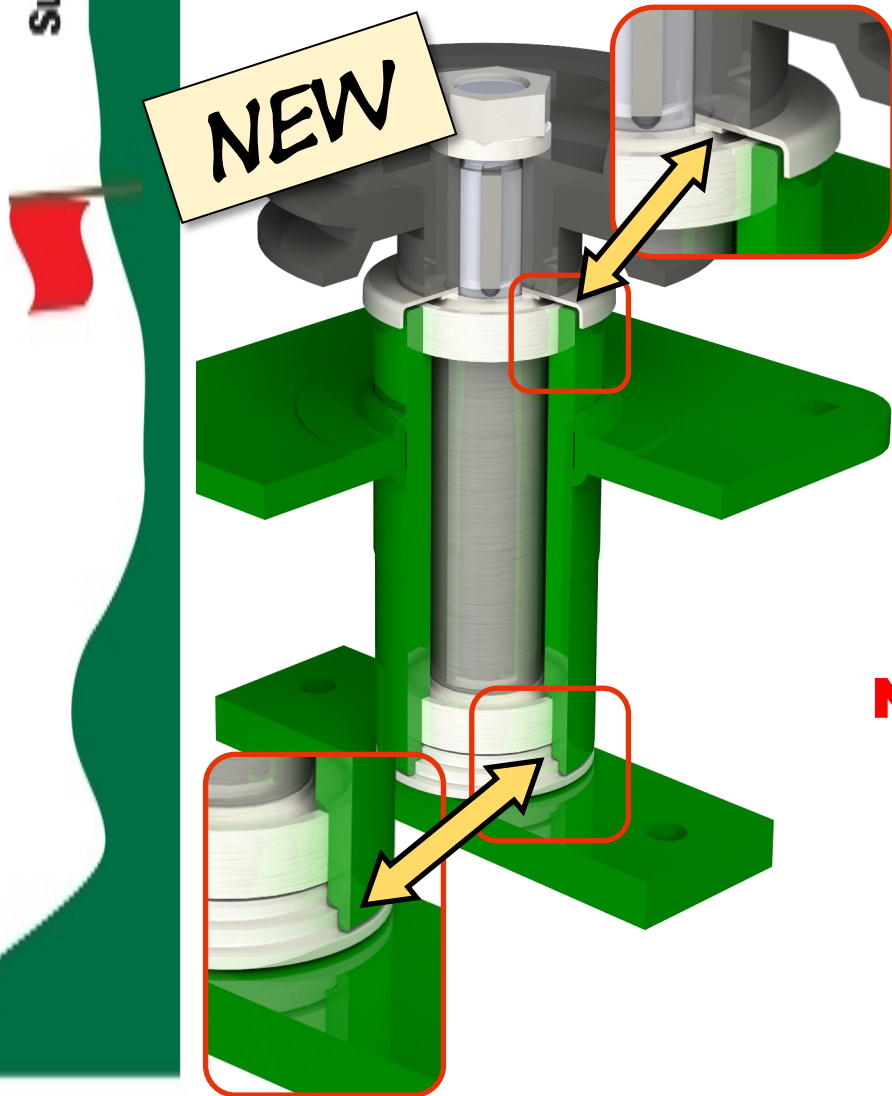


Maintenance Free Blade Spindles with upper and lower **SPLASH** Shields

Moisture is the greatest enemy to a sealed bearing. Keeping water away from a warm bearing is the key to a long, trouble-free service life. Progressive's Maintenance Free Blade Spindles are equipped with integral Splash Shields.



- Directly interchangeable:** with existing Progressive blade spindles
- Rebuildable:** All existing components (except the housing) can be used when rebuilding spindles from older mowers
- Upper Shield:** Caps the top of the spindle for added protection
- Stepped Lower Shield:** It is very difficult for water to enter the housing and reach the lower bearing, this protects the bearing from moisture contamination

**Now STANDARD EQUIPMENT on all
TD65-2, TD65,
TDR-X / TDR-12 and TDR-15
and Pro-Flex 120 models!**

PROGRESSIVE
TURF EQUIPMENT INC.
The Better Built Choice™

Older mowers can be updated to current production standards!

Splash Shields are included in the following SPINDLE REBUILD KITS

MAINTENANCE FREE BLADE SPINDLES REBUILD KITS

P/N 527568 for **TDR-X, TDR-12, TDR-15**

P/N 527571 for **TD65-2, TD65 and Pro-Flex 120**

The above spindle rebuild kits (item #3) contain both the top and bottom splash shields, (items 10 and 23). See illustration

When rebuilding a blade spindle, DO NOT hammer the bearings in. ALWAYS refer to the instructions found in the Operator's Manual.

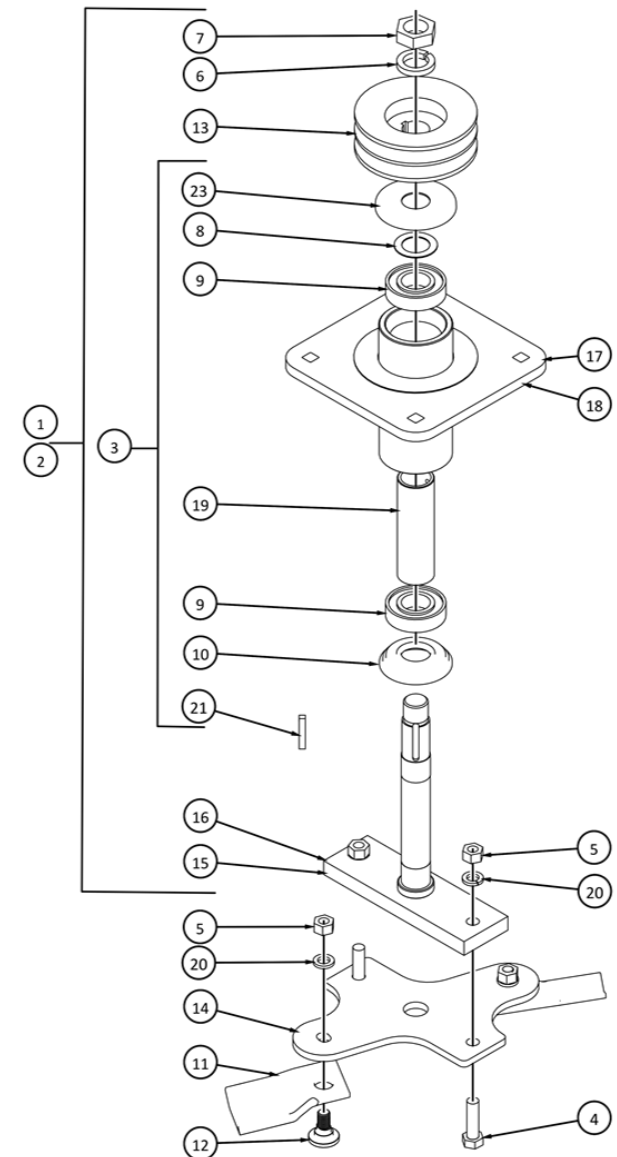
NOTE: when rebuilding an older spindle assembly and updating to one with splash shields, a new housing (items 17 and 18) will be required to allow the complete spindle to be assembled correctly.

SPLASH SHIELDS ARE NOW STANDARD EQUIPMENT

Production cut-in beginning serial numbers:

TDR-X s/n 20111061, **TDR-12** s/n 2112131 **TDR-15** s/n 2115254

TD65-2 s/n 2165-21547, **TD65** s/n 21651638 , **Pro-Flex 120** s/n 21272632



TDR-X spindle rebuild kit shown for reference only

ITEM	DESCRIPTION	QTY	ITEM	DESCRIPTION	QTY
1	SPINDLE ASSEMBLY COMPLETE - RED	1	13	PULLEY- 5" 1-1/8" BORE	1
2	SPINDLE ASSEMBLY COMPLETE - GREEN	1	14	KIT - BLADE BARS FOR 16.75" - 9 PCS	1
3	BLADE SPINDLE REBUILD KIT	1	15	BLADE SPINDLE - RED	1
4	HEX BOLT- 1/2 X 1.75 NC GR5 PL	2	16	BLADE SPINDLE - GREEN	1
5	HEX NUT - 1/2NC GR5 PL	4	17	SPINDLE HOUSING - RED	1
6	LOCKWASHER L.H. (3 PCS)	1	18	SPINDLE HOUSING - GREEN	1
7	HEX NUT- L.H.	1	19	BEARING SPACER TUBE	1
8	1.125" SHIM WASHER (9PCS)	1	20	LOCK WASHER- 1/2 PL	4
9	BEARING - 6206	2	21	KEY - 1/4" X 1.50"	1
10	HOUSING BOTTOM CAP - 6206	1	22	TDRX HIGH LIFT BLADE KIT 9 PCS	1
11	SWING BLADE 50 PCS/KIT	2	23	SHIELD - SPINDLE TOP	1
12	PRO-EZ II BLADE BOLT KIT- 25 PCS	2			

Always consult the parts manual for your model and serial number.

Never wash a mower if the spindle housings are warm

