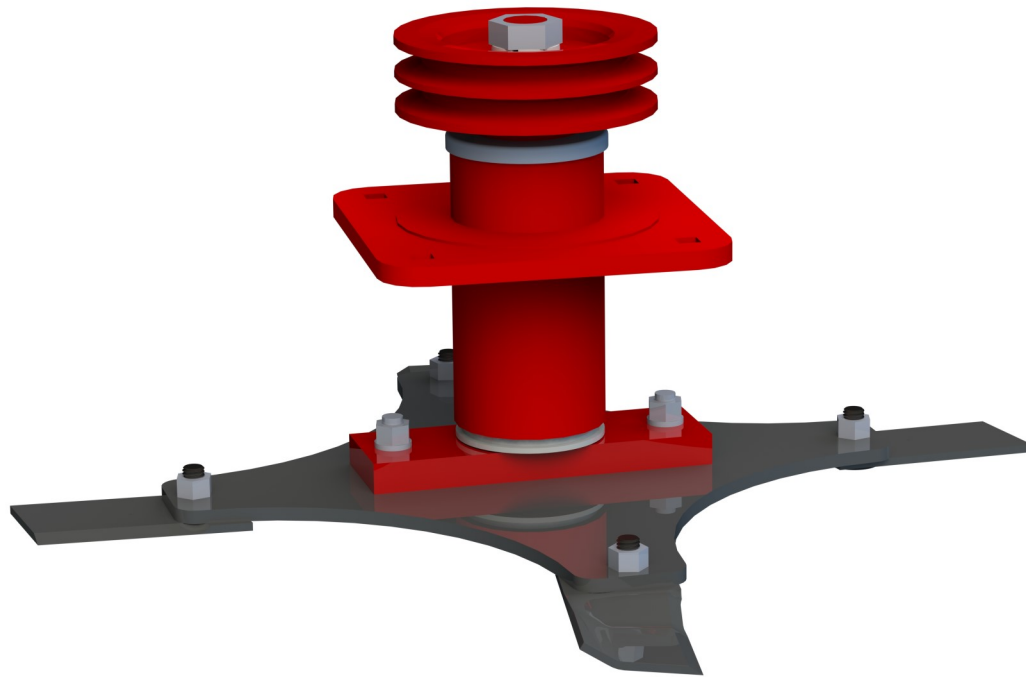


Introducing Pro-FORE™:

Ideal on warm season grasses

Available for the following Roller Mowers: TDR-22, TDR-26 and TDR-30

- ☑ Pro-FORE blade system: adds 2 more blade edges to each spindle (2 high-lift and 2 flat)
- ☑ Produces a finer cut: with no more HP requirement than a two blade system.
- ☑ Field Proven: Pro-EZII replaceable tips are used,



With **Pro-FORE** Progressive offers more blade options to optimize your cut to the growing conditions. Mounts in place of an existing Progressive one-piece or Pro-EZII blade without any modification to the existing blade spindle..

PROGRESSIVE
TURF EQUIPMENT INC.
The Better Built Choice™