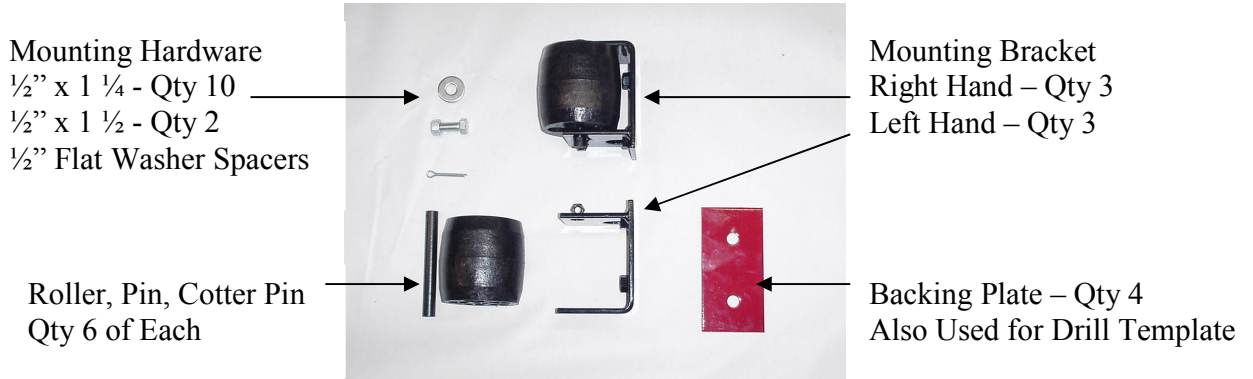


TD 92 ANTI SCALP ROLLER KIT INSTALLATION

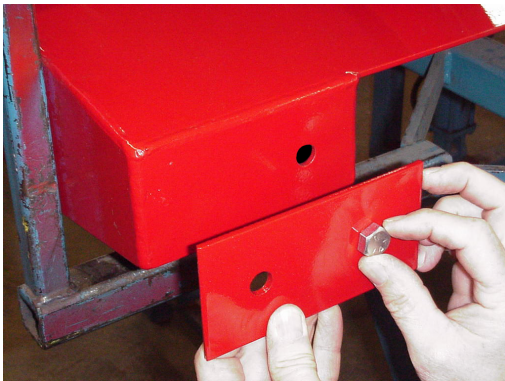
CONTENTS OF KIT:



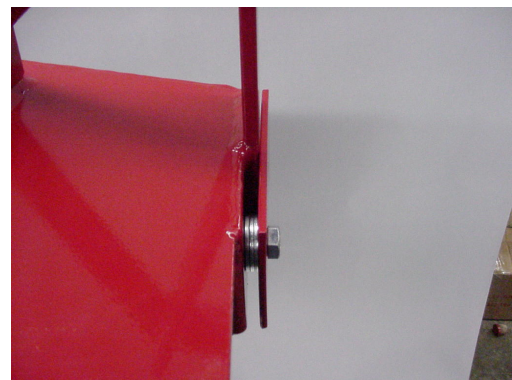
LEFT HAND CORNERS

RIGHT HAND CORNER PINS

1. Use the Backing Plate and bolt it to the back of the Deck to use as a template for drilling the $\frac{17}{32}$ " mounting holes.



2. Align the plate up with the plate on the back of the mower. On the right hand side use the 4 - $\frac{1}{2}$ " washers as spacers to correct for the $\frac{3}{8}$ " flat bar.

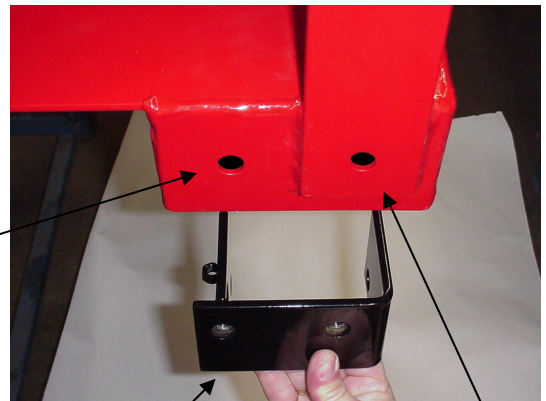


3. Mark the location of the second hole and drill the $\frac{17}{32}$ " mounting holes.



4. On the wing decks where the corner pin is located, mount the roller bracket in place using the $\frac{1}{2}$ " x $1\frac{1}{2}$ " long bolt on the flat bar. The formed corner of the roller bracket must be on the outside, making it a right hand bracket.

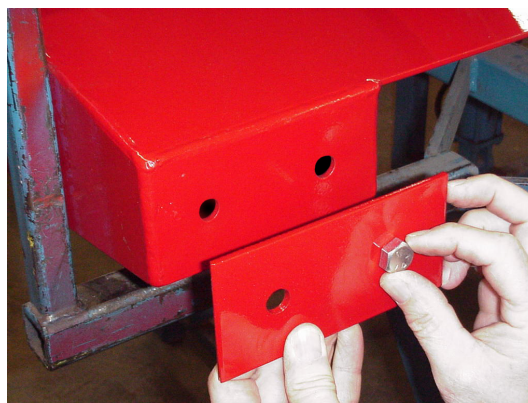
1 $\frac{1}{4}$ " Long Bolt



Right Hand Bracket

1 $\frac{1}{2}$ " Long Bolt

5. Mount the brackets at all other locations with the $\frac{1}{2}$ x $1\frac{1}{4}$ " bolts and the backing plates.



6. Tighten all bolt securely.